

PART OF S.W. 1/4, SEC. 23, T.6N., R.2W., S.L.B.&M.

105

# HILL ACRES SUBDIVISION

IN WEBER COUNTY

SCALE 1"=100'

TAXING UNIT: 16

PREFIX: 15-105

SEE PAGE 106

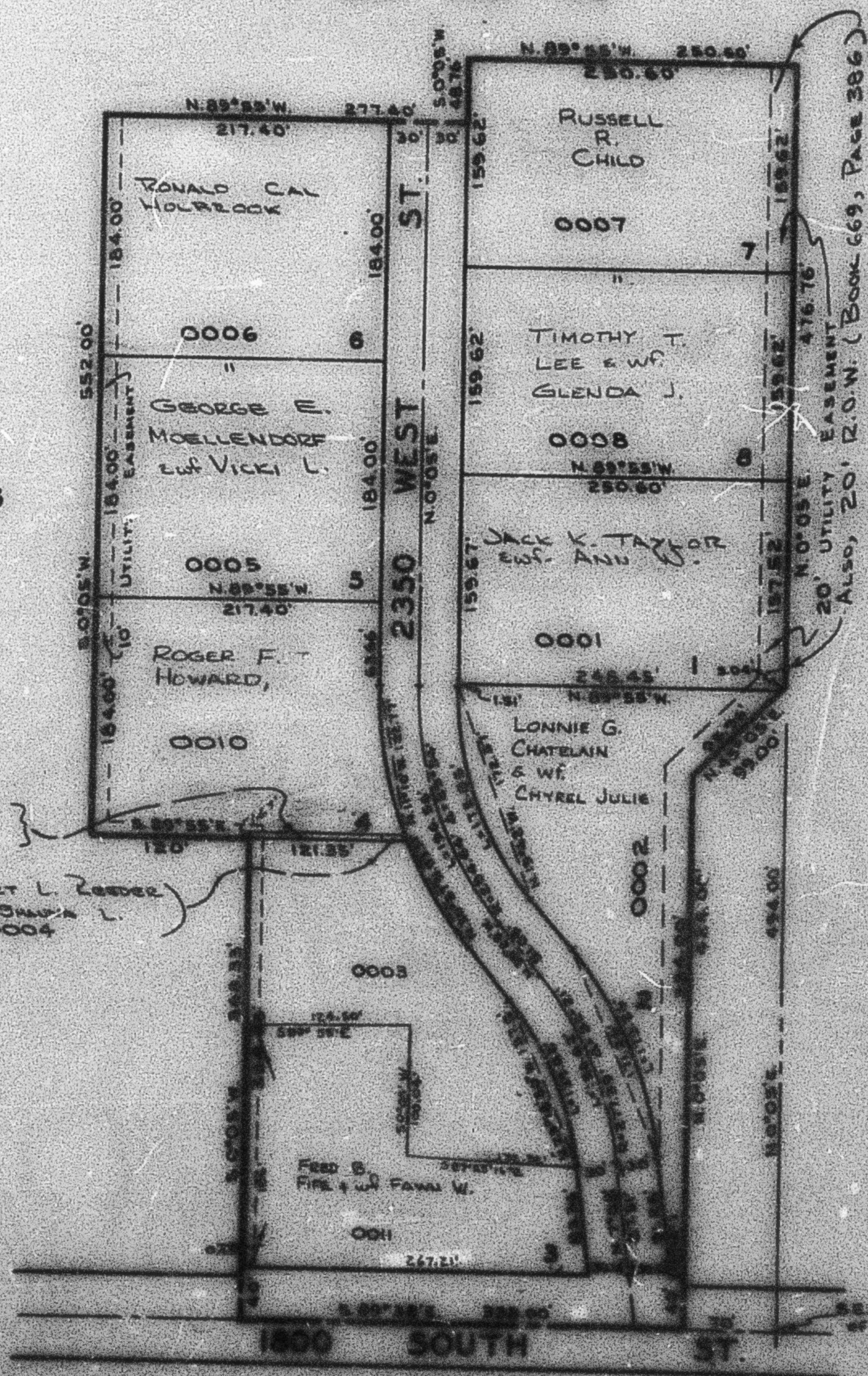
SEE PAGE 61-3

EXCEPT WHERE OTHERWISE SHOWN,  
ALL LOTS ARE OWNED BY:  
H. RAY HILL  
C/WF WYNONA

SEE PAGE 61-2

COUNTY OF WEBER  
0009  
ROBERT L. ZEDER  
C/WF SHARPA L.  
0004

NOTE: SEE ORIGINAL PLAN IN BOOK 15,  
PAGE 44 FOR COMPLETE ENGINEERING  
DATA.



SEE PAGE 75